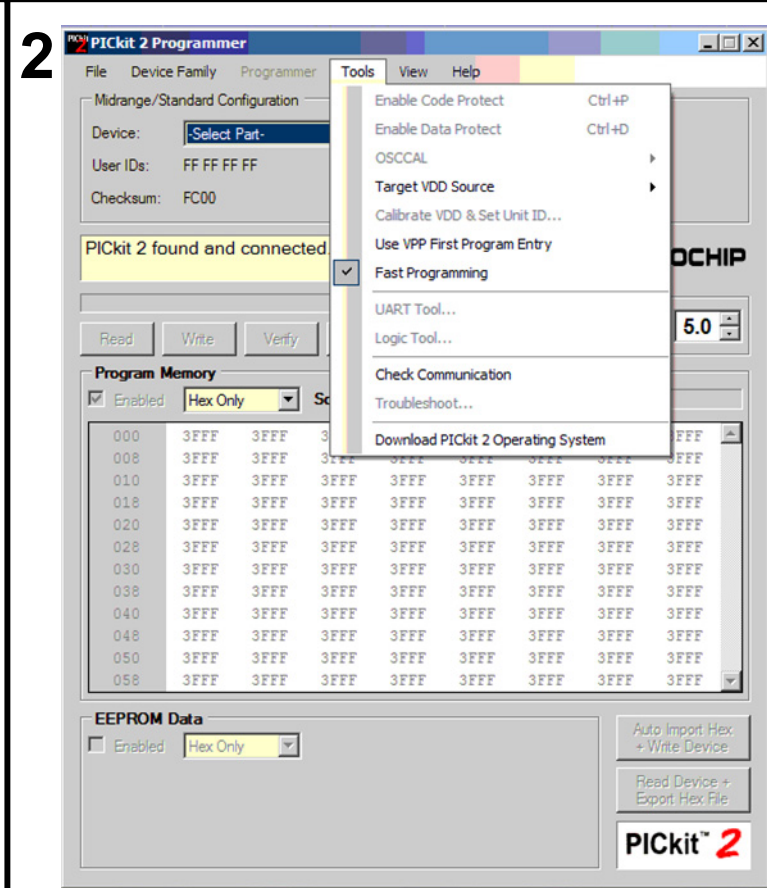
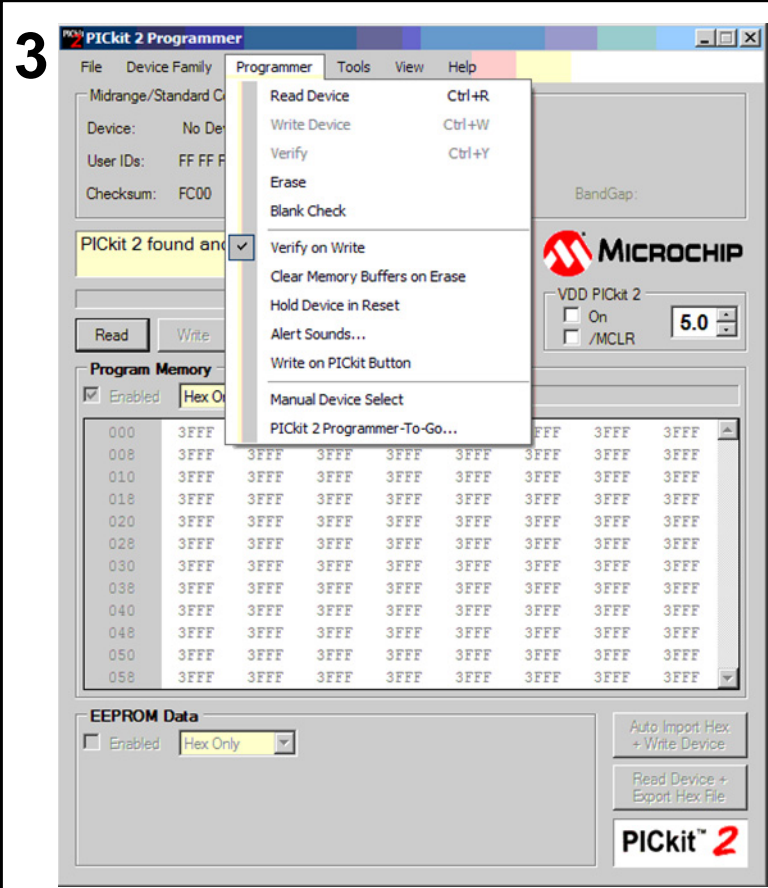


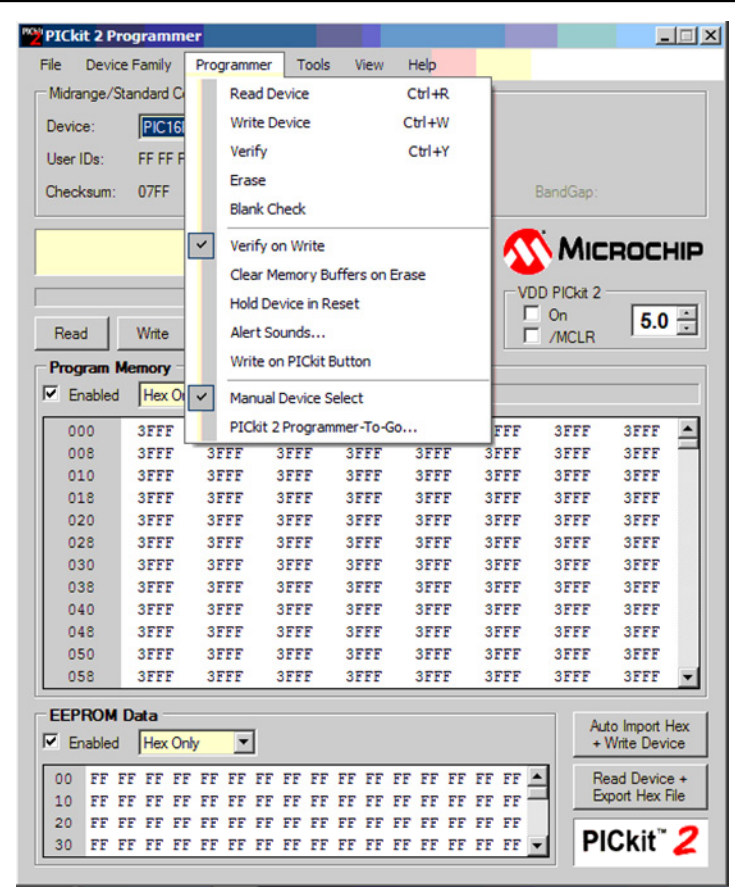
Ensure PICKIT2 OS is 2.32.00 (This is the code in the actual programmer hardware).



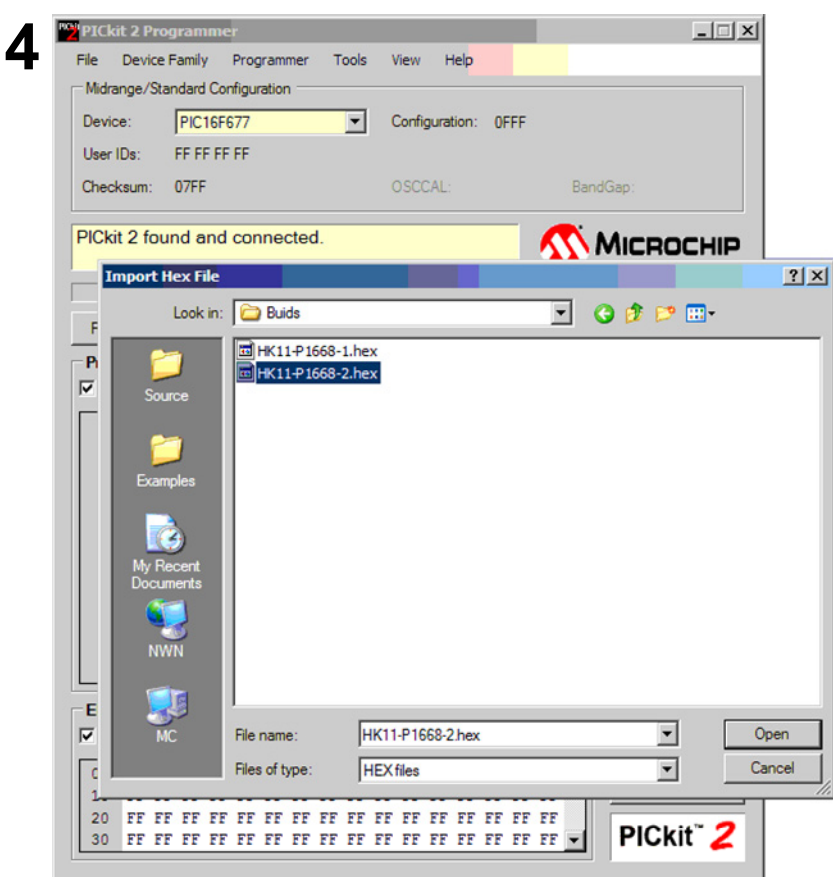
Set programming mode as shown.



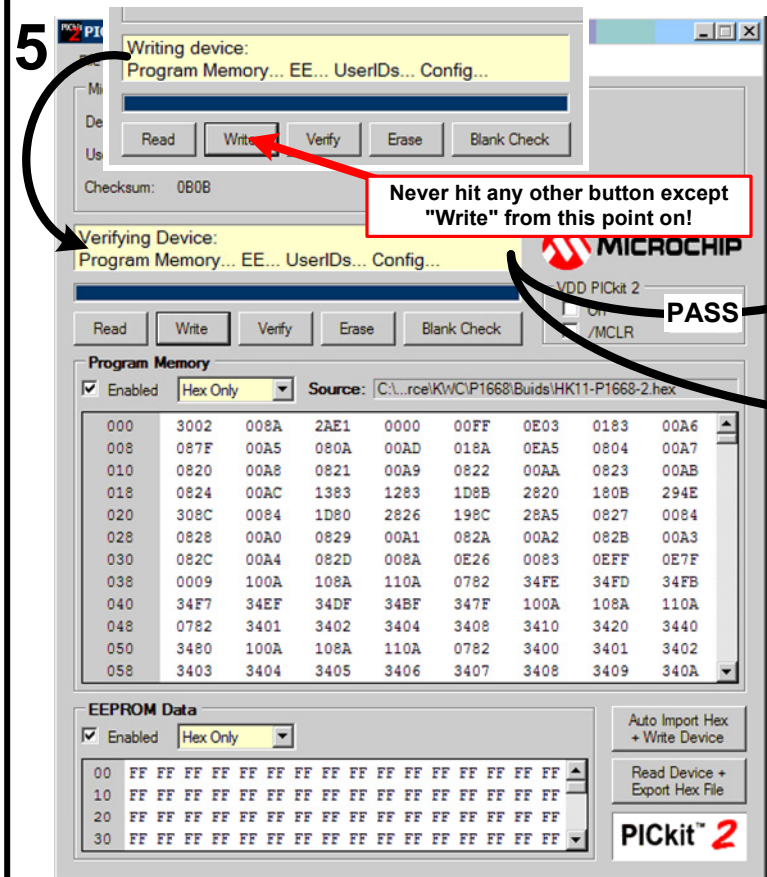
Select "Verify on Write" to automatically verify programming.



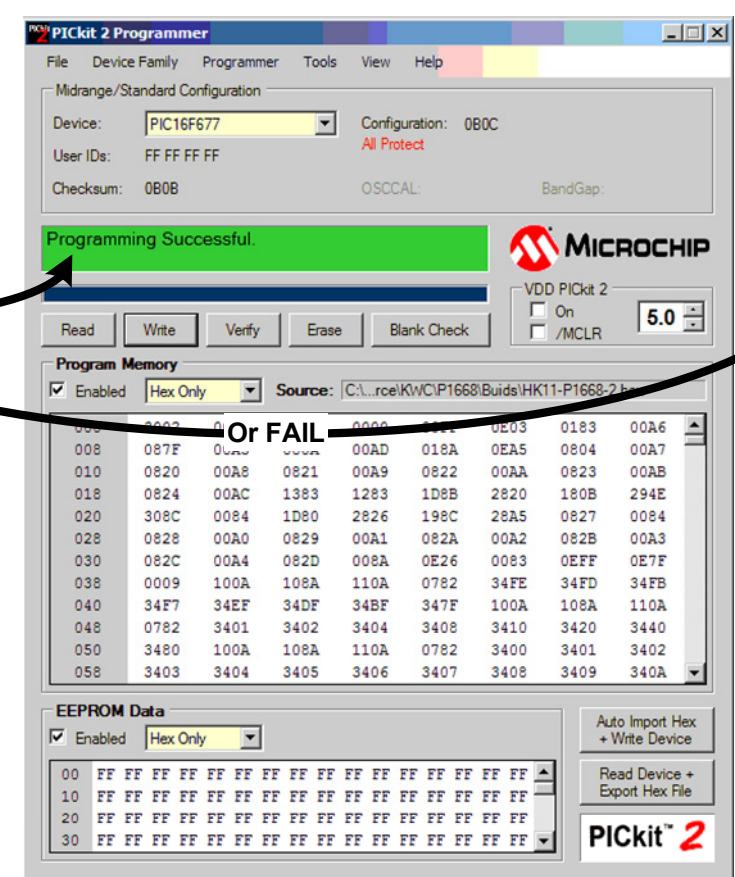
"Manual Device Select" may also be chosen to allow code to be loaded when not device is connected.



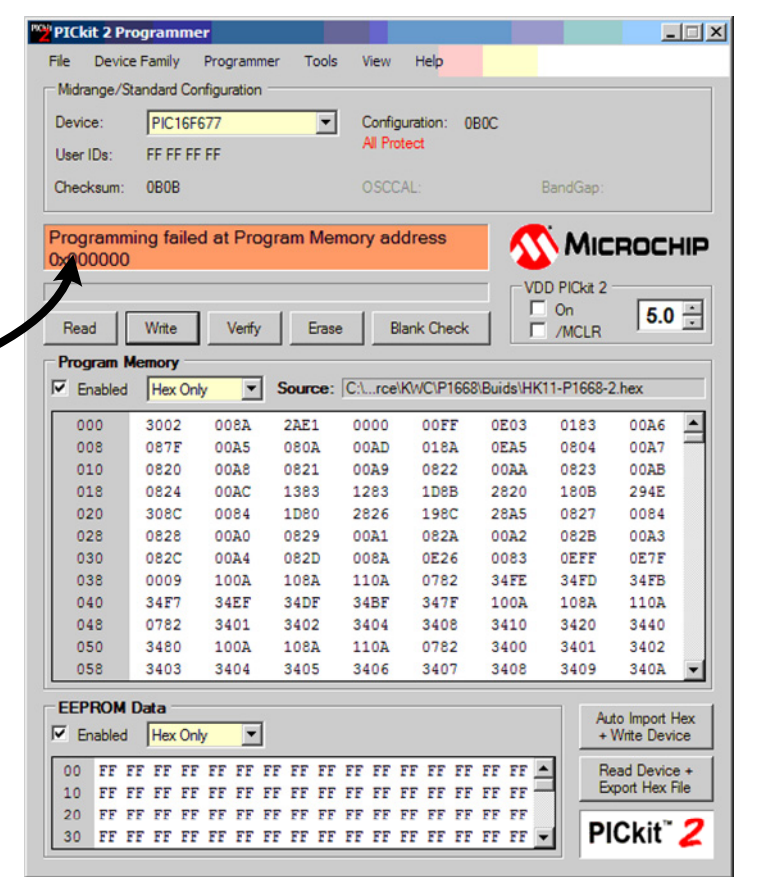
Load the hex file (Auto detect, i.e. not "Manual Detect" from step 3 requires a device be connected before loading the hex file).



When the "Write" button is pressed, the PICKIT 2 will automatically (1) Write the device, (2) Verify the device, (3) Write the code protect bit and then (4) Verify the code protect bit. No other button but "Write" ever needs to be pressed to program an unlimited number of PICs per session. The screens shown above are the programming progress after simply hitting "Write"!



Or FAIL



Or FAIL